



Colorado Mineral Society

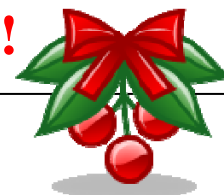
Mineral Minutes



Volume 77, Issue 9

December 2013

CMS Christmas Holiday Party December 6, 2013 starting at 6:30pm (note earlier time)!!!!



President's Message

By Bruce G. Sales

Hello everyone,

Welcome to the mid-fall season, colder weather, less light to collect in, and snow in the high country. **This month, the meeting is the Christmas Party, which will start at 6:30pm, with set up starting at 5:00pm, at St. Paul's Episcopal Church, 10th & Garrison Street in Lakewood.** We welcome and appreciate any help that we can get in setting up for the party and for cleaning up after said party.

We are starting the party early in order to accommodate all of the planned activities of the evening. The display theme for December is "Red and Green Minerals", so bring your best red and/or green mineral specimens with labels to put in the display cases; this has been an annual tradition and over the years we have displayed many fine specimens. More information about the Christmas Party is located on Page 3.

There will be a raffle of six very nice mineral specimens, and Eva has hinted at a verbal auction of some specimens from the Judith Holmes Collection.

As usual, I am going to ask for you to consider volunteering for service to the Colorado Mineral Society (CMS). We have several positions that need to be filled, including Hospitality, which involves setting up and supplying refreshments for the monthly meetings. In addition, we need a Back-up Greeter for greeting guests at the beginning of the monthly meeting, which involves giving out door prize tickets and making sure that everyone has an official or temporary name tag; and a Co-Field Trip Leader to help Gary Rowe plan next summer's field trips. We have had good success with recruiting members for the Display Committee, thanks to Dan Wray, Lesley Sebol and Harold Taylor, for forming the core of the Display Committee. The Display Committee will be responsible for arranging mineral displays at the monthly meetings, the Club Prospectors Case at the Denver Gem and Mineral Show in September, and a special display at the Wheat Ridge Recreation Center in the Fall of 2014. If you are interested in volunteering for these or any of the positions that may become available, please contact myself, Gary Rowe, or any member of the Board of Directors.

I look forward to seeing all of you at the Christmas Party.

INSIDE THIS ISSUE

- 1 President's Message
- 3 Club News
- 4 Collecting Evaporites at Camp Verde, Arizona
- 6 Raffle News and New Members
- 7 Membership Reminder
- 8 Meeting Notes

In Memoriam

Denzil J. Wiggins, 84 of Lakewood, CMS member and owner of the former Red and Green Minerals Rock Shop, passed away 11/30/2013. Our deepest sympathies to his wife Marjorie and family.

Visitation will be Sunday 12/8/2013 from 2pm to 4pm and Funeral Service will be Monday 12/9/2013 at 1pm at Horan & McConaty Family Chapel, 3101 South Wadsworth Blvd. (303-986-9615); Interment at Fort Logan National Cemetery.

Memorial Contributions suggested to the Alzheimer Association, 455 Sherman St. #500, Denver, CO, 80203.

COLORADO MINERAL SOCIETY OFFICERS

2013

President: Bruce G. Sales
First VP-Programs: Gary Rowe
Second VP-Education: Debbie Kalscheur
Secretary: Sandra Gonzales
Treasurer: Eva Siemonsma

Appointed Board Members - Committee Chairpersons

Annual Auction: Richard Nelson Family
Door Prizes-Guests: Jessica Blackburn and Donna Roberts
Library: Kevin Atwater
Exhibits: **OPEN**
Membership: Cara Reynolds
Field Trip Leader: Gary Rowe
Field Trip Leader Co-Chair: **OPEN**
Nominations: Daryl Lamb
Grab Bags: Dale Block
Editor: Amber Brenzikofer
Historian: Amber Brenzikofer
Youth Activities: Lewis Reynolds
Hospitality: **OPEN**
Donations: Debbie Kalscheur
Web Master: Julio Edwards
coloradomineralsociety@comcast.net



Representatives (Board Members)

Denver Council Rep: Daryl Lamb
Denver Show Rep: Bill Jones

COLORADO MINERAL SOCIETY (CMS) was founded in 1936 by a group of distinguished individuals within the mineralogical field. The organization was incorporated as a non-profit, educational organization in 1948. The Society is affiliated with the Colorado Federation of Gem and Mineral Societies, Rocky Mountain Federation of Mineralogical Societies, and the American Federation of Mineralogical Societies, a founding member of each group.

PURPOSE: To promote the study of minerals and other geologic materials, to encourage mineral collecting as a hobby and to conduct public meetings, lectures, and field trips, and to engage in all activities which relate to said purposes of the organization.

MEETINGS: General membership meetings start at 7:30 PM on the first Friday of each month, October through May, at St. Paul's Episcopal Church, at 10th and Garrison in Lakewood, CO. Displays are set up by members about one-half hour before meetings. Specimens may be available for sale and trade. **VISITORS** and **GUESTS** are welcome.

BOARD MEETINGS: The board members meet once a month to complete the executive business and affairs of the Society. Meetings will start at 7:00 PM usually the third Tuesday of each month. Additional meeting times, if necessary, may be called by the President or any three members of the board and will be announced at the general or board meetings.

MEMBERSHIP: Open to all persons who agree to abide by Society rules and rules of the Federations. Annual fees: \$16.00 for a Family or Newsletter Membership, \$14.00 for a Single Membership, \$12.00 for a Senior Membership (single or family over 65), and \$12.00 for junior members under the age

of 18 who are not included in a family. Name badges are available for a one-time fee of \$5.00.

ANNUAL EVENTS: Yearly activities include a silent auction of minerals, fossils, gems, jewelry, equipment and other items related to our interests; participation in the Colorado Contin-tail, the largest mineral swap show in Colorado; participation as a member of the Greater Denver Area Gem and Mineral Council in sponsoring the largest gem and mineral show in Colorado; and the Founder's Day dinner.

FIELD TRIPS: The Society sponsors several field trips from Spring through Fall for the purpose of collecting minerals, crystals, and fossils. These trips are one-day, two-day, and occasionally several-day adventures. A field trip guide is published each year in May.

NEWSLETTER GUIDELINES: CMS has a proud history of promoting the education and pure enjoyment of the mineralogical world. At the very heart of its existence are the many volunteers and contributors who spend their time and efforts in direct support of the club's mission. The CMS official newsletter **MINERAL MINUTES** is published monthly during the active meeting season (October through May) and a summer edition, and is the primary way the club's activities and mission are communicated to its members and prospective members. On that basis, the Board of Directors would like to offer the following content guidelines for CMS newsletter contributions:

- Formal announcements concerning club business and/or membership
- Information around mineral-related education opportunities or fundraising activities
- Stories or history that concentrate on the edifying aspects of mineral collection and education
- Sharing of personal mineral-related experience from field trips or other related adventures serving an educational purpose
- Announcements of volunteer/leadership opportunities for the club or club representation
- Worthy news events or discoveries related to mineralogy or geology that align to club's core interests
- Appropriate announcements regarding mineral shows, one-time mineral related events, mineral auctions, sale of private collections and/or equipment, etc.
- Information around relevant donations and/or gifts made available to the club or club members

Please note that the editor may correct spelling, syntax, or content to conserve space and is also entitled to bring contributions in compliance with newsletter guidelines

Any material herein may be reproduced by any club if proper credit is given. Material from many sources is used in the Mineral Minutes. While it is believed that these items are accurate, neither the editor nor CMS assumes any liability for their use. Advertiser's claims are their own, and their products are not warranted by CMS.

Deadline for publication is the 24th of the month prior to publication. All correspondence to Mineral Minutes should be sent to Editor, P.O. Box 280755, Lakewood, Colorado 80228-0755 or by email to brenzikofer@yahoo.com.

CLUB NEWS

In Memoriam

Bob Jordan, genuine hard rock miner

Colleagues,

It is with great regret that I report the passing of CMS member Bob Jordan, who died 11/1/2013 at age of 85. There is no formal service, but a website will be created by his sons to memorialize his life. Donations in his name can be made to the Denver Hospice. Please spread the word.

Cordially, Bruce Geller

November Speaker Recap

The CMS November meeting speaker was **Bob Patten**, who gave an informative presentation on different Native American stone tools and his own study of flint knapping. Bob has knapped replicas for over fifty years, using tools of stone and antler. He is known in the circles as "Knapper Bob" and is an author of several books on the subject, including "Old Tools—New Eyes" and "Peoples of the Flute", and many articles for various newsletters and publications. Thank you Bob for a fascinating and informative evening.

January Meeting Speaker

The CMS January 3, 2014 meeting speaker will be Pete Modreski, a geologist at the U.S. Geological Survey (USGS), who will be talking about "Gem Tourmaline Mining in Maine". Pete attended the PEG2013 International Pegmatite Conference in New Hampshire this spring with field trips to Maine. The presentation will include a ~7 minute video clip documenting the recovery of gem, green elbaite crystals from a pair of pockets at one of the mines.

Colorado Mineral Society's Junior Rockhounds Program

The CMS Junior Rockhounds Program will not be meeting in December -- instead, enjoy the Christmas party! Interested children are encouraged to continue working on badge requirements with their parents or guardians during the holiday recess from school. In January, we will jump from the stone age to the computer age, so look forward to bringing in the new year by heading back to the future.

Sincerely, Lewis Reynolds, Coordinator



Christmas Holiday Pot Luck Party

Friday, December 6th at 6:30pm

St. Paul Episcopal Church
9200 W. 10th Ave, Lakewood, CO 80215
(10th Avenue and Garrison Street)

Come celebrate the season with good company, fun things to do, entertainment, good food, and contests. Note that we are starting the celebration a half hour earlier. Here are some of the activities we are planning and need all to pitch in and volunteer to help:

- ❖ **Gift Exchange** - bring a rock related gift (approximately \$10), then you will receive a gift. We have our own "rock tree" to place your packages under.
- ❖ **Cake Steal** - we need cakes for our cake table. Tickets will be \$1.00 for a chance to win one. Please donate a cake.
- ❖ **Mineral Challenges** - one challenge for the professional rockhounds and one for the amateurs, with prizes for the first, second, and third place finishers.
- ❖ **Raffle and Verbal Auction** - a raffle of six very nice mineral specimens, and a verbal auction of several specimens from the Judith Holmes Collection.
- ❖ **Display cases** - bring your red and green rocks, minerals or gems or a combination of both colors for the cases.
- ❖ **Singers** - the Golden High School - 24th Street Singers will entertain us again this year.
- ❖ **Pot Luck Food** - bring your favorite party pot luck food! We will have plates, flatware, napkins, cups, drinks, and condiments.
- ❖ **Mitten Tree** - Please bring kids mittens, hats, and scarfs to donate to St. Paul's mitten tree. We like to say thank you to the Church for hosting our meetings throughout the year by donating to the mitten tree.
- ❖ **Visitor from the North** - we could quite possibly have a visitor from the North, farther than Point Barrow

Collecting Evaporites at Camp Verde, Arizona

By Pat Tucci

The Denver Gem & Mineral Show was over, and it was time to get packed up for our annual road trip to visit our daughter in southern Oregon. This year, we decided to extend the trip and travel to Sedona, Arizona for a week. There's not much in the way of rock collecting to do in Sedona, although if you are into the metaphysical side of minerals you'd be in heaven. However, about an hour's drive south of Sedona you can collect various evaporite minerals at Camp Verde, which is about 90 miles north of Phoenix.

The Camp Verde Salt Mine is believed to be one of the oldest known mines in the United States, possibly worked for salt as long as 2,000 years ago. The salt deposit attracted new attention with the establishment of a nearby fort in the late 1800's, and in the 1920's, the Western Chemical Company operated an open pit on the property. In the early 1930's the Arizona Chemical Company employed underground mining techniques and tunnels were driven in horizontal strata for several hundred feet to follow rich layers of salt. Duty-free and purer German salt entered the market in 1933 and essentially forced the closure of the mine. Also, much larger deposits in the US and Canada were developed and the mine has been dormant since the 1960's.

The rocks that contain the evaporites were deposited in a lake about 13 million years ago, when drainage at the south end of the Verde Valley was blocked by volcanic eruptions. During dry seasons the lake was subjected to intense evaporation, depositing salt, gypsum and other rarer evaporite minerals as layers within the lakebed sediments.

A friend and I spent about 2 hours collecting at the site. At first, all we saw was halite (salt) that looked like it was growing up out of the ground in strange shapes due to dissolution by rainwater. A small stream within the site also contained halite. Eventually we worked our way to the east side of the deposit, where there was abundant crystals lying on the surface. Most of what we collected was gypsum and gypsum after glauberite. (Glauberite is a sodium-calcium sulfate that is not stable under the dry conditions in Arizona. It was formerly called "Glaubers Salt".) The crystals are white to gray-white, growing in clusters up to 6 inches across. The crystals are mildly fluorescent under short-wave UV light. I have some calcite after glauberite crystals that were collected here by other friends in the 1970's, but we did not find any of those specimens on this trip.

The mine is located about 2 miles west of the town of Camp Verde, southeast of Clarkdale, on the west side of the Verde River, at coordinates 34.5833N, 111.8944W. The fall is a great time to visit the site, as the temperatures are relatively cool and it tends to be the dry season. Summer temperatures can be well over 100, and I wouldn't recommend collecting at that time.

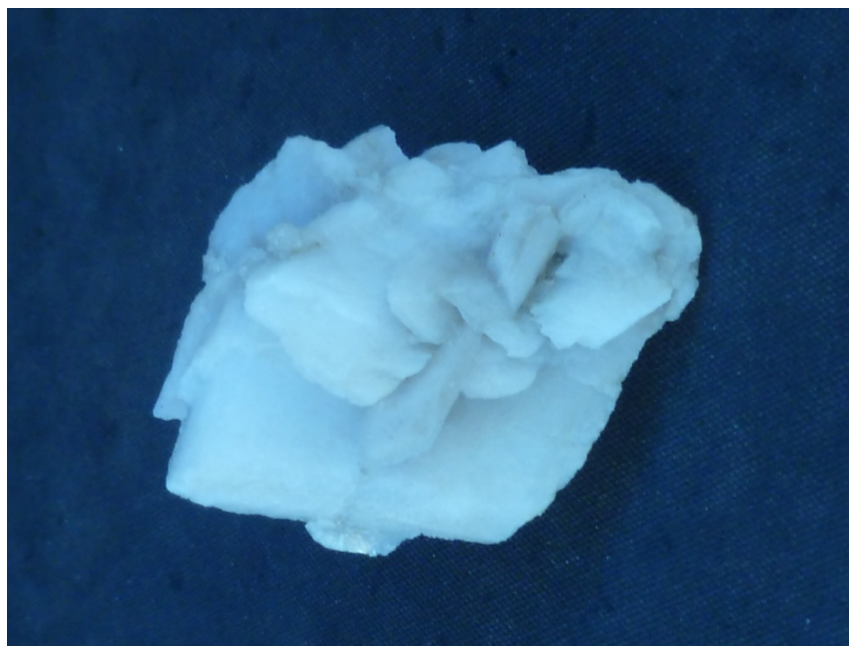


Tailings pile of evaporites at the site.



Halite that appeared to be growing out of the ground at the mine.

Collecting Evaporites at Camp Verde, Arizona (Continued)



A cluster of gypsum after glauberite crystals.



Abundant gypsum after glauberite crystal on the ground.



Halite in the streambed at the mine.

November 1st Raffle News

The raffle was again filled with some great specimens and your continued support of this endeavor allows the proceeds to be spent on CMS education, the purchase of library materials, and the state science fair awards. The retail value of the evenings donations were \$130, bringing a total of \$77 into the raffle account. The nice fossil fish (Lycoptera) specimen (\$25) donated by **GEOdyssey** was won by Nels Grevstad. The amazonite specimen (\$20) donated by **David Geiger** was won by Bruce Sales. Lucky Aaron Cross won two specimens, a stibnite (\$30) donated by **Self-A-Ware Minerals** and a selenite (\$15) donated anonymously. Bob Heckman won a calcite specimen (\$15) from an anonymous donation and John Powell won a large trilobite specimen (\$25) donated by **Richard Owens**. Thank you to my two great helpers: Dameon and Riegel

Thank you to those who donated these great specimens, it is fun to see the happy smiles when their number is called to be a winner!!!

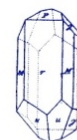
Congratulations to all our lucky winners!

*Submitted by Amber Brenzikofer
CMS Deputy Raffle Manager*



Richard Owens

GEOdyssey LLC
Minerals, Fossils, Jewelry



**Zelda Bailey
Pat Tucci**

P.O. Box 16339
Golden, CO 80402
www.geodyssey-rocks.com

Tel: (303) 279-5504
Cell: (303) 898-9674
pattucci@comcast.net

SELF-A-WARE MINERALS



SPECIALIZING IN
COLORADO MINERALS

JEFF SELF
303-898-7539

DONNA WARE
303-898-4019

P.O. BOX 473
INDIAN HILLS, COLORADO 80454-0473

New CMS Members

First Listing

- David Bier
- Mark Jacobson and Ruth Yeager
- Randall and Laura Kokkinen & Family
- Donald Niemczyk

Per CMS Bylaws, comments concerning new, first listing members should be formally submitted to the President.

Second Listing

- Travis and Michelle DeBell & Family
- Constance Holcomb
- Ezekiel Kingsbury
- Dave and Shelley Madonna & Family
- Danielle McGuire and Nathan Stone & Family
- Elizabeth McGuire
- Steven and Mel Whitcomb & Family

CMS Membership Reminders

A friendly reminder that your annual membership dues are coming due for 2014. Your current membership ends December 31, 2013. We are preparing a new membership application that should be ready by January. It will be sent out in the January newsletter and posted on the CMS website for new members to include with membership dues payment. The new updated form will ask additional questions on your interests, allow for multiple email contacts if more than one person in a household would like the newsletter or notices, and include a list of volunteer opportunities. Current and renewing members may wish to fill out the new form to provide this additional information.

You can pay your dues in two ways:

1. Pay with cash or check at the general meetings the first Friday of each month. Look for the Membership Chairperson to obtain a receipt and membership card. No memberships accepted at the December Christmas Party/Meeting.
2. Send a check made out to "Colorado Mineral Society" or "CMS" to P.O. Box 280755, Lakewood, Colorado 80228-0755. Please do not send cash through the mail. Pick up your membership card at the next general meeting. Cards not picked up will be mailed to you.



CMS Membership Fees:

Family: \$16 per year
Single: \$14 per year
Senior (single or family): \$12 per year
Junior: \$12 per year

Also, due to RMFMS insurance and liability purposes, we need to know the month and year of your children's birthdays, so please provide this information when you renew your membership. The children's information will not be published.

Remember you can receive color electronic and/or black and white hardcopies of Mineral Minutes. However, CMS is trying to be "green" and cut back on paper copies, so please indicate if it is OK to send you an electronic copy only of the newsletter. Also, make sure to give us your updated email address and street address so you can continue to get the newsletter and other important CMS updates.

For Sale

Gently used Facetron faceting machine and accessories. Includes:

- Facetron manual and 2 instructional books ("Facet cutters handbook", "Fundamental faceting")
- 5 1.5-micron lap discs (1 slightly used)
- 3 faceting discs (170-200, 325, and 1200 grits)
- 1 cab-polishing disk w/ diamond compound
- 1 diamond smoothing disk (cab pre-polish, blue, can be recharged)
- 1 diamond smoothing disk (325 mesh, brown)
- Set of 15 dop sticks
- Aculine transfer stand
- Small containers with 1200 grit, 600 grit, and 2 unknown grits
- Dopping wax
- Denatured alcohol



The machine has not been used much, and is in good condition. Asking \$700. Email Christie or Tel Yohannes at tyarti@comcast.net.

CMS General Meeting Notes for November 1, 2013

Meeting called to order at 7:32 pm

Bruce welcomed the visitors. Both visitors filled out applications to be new members.

Kids were called to the children's program and a call for additional parent was made and need filled.

Bruce called for Open Announcements:

- Star let everyone know that long-time member and former owner of Red & Green Minerals, Denzil, is now in hospice care. She brought a card for members to sign.
- Jerry Kiefer announced that he once again brought rocks from a former member's collection for folks to look over and take home.
- The club has an opportunity to display at a recreation center. The display would be up for a number of months. Bruce Sales called for volunteers to help with this opportunity and displays in general. A sign-up sheet for displays was available in the front. Committee will need to generate ideas for the Rec Center display and organize getting it set up.
- Bruce Sales called for new volunteers for the following areas:
 - Hospitality
 - Displays
 - Assistance to Gary for Field Trips
- Member made announcement to remind folks of the gem show taking place this weekend at the Jefferson County Fair Grounds, Sat/Sun

Bruce announced that the Board of Directors is looking to rewrite the application to include a section for volunteering - reinforced existing members the importance to contribute.

Amber gave the Newsletter Editor report. Newsletter was sent out. If members need a hard copy, they should see her. She also made a call for new articles and welcomed members to write up mineral-related family vacations or trips.

Bruce announced that next month is the Christmas party. He called for volunteers to setup up for the party starting at 5pm. The party will begin at 6:30 pm, one hour earlier than our normal meeting. A write-up of the Christmas party events will be included in the next newsletter.

Bruce announced the speaker for the evening, Bob Patten. We went to break at 7:50 pm with a return at 8:15 pm.

Returned from break and conducted the Children's door prizes. The winners were as follows:

- | | |
|------------|-----------|
| 1. Kuyper | 4. Dameon |
| 2. Tatum | 5. Riegel |
| 3. Kaitlyn | |

Debbie Kalscheur formally introduced the speaker for the night. Bob Patten presented on stone tools of the Ancient Ones including material choice and utilization of the tools created. He then demonstrated flint knapping and the creation of a knife

Adult Door Prizes were drawn. The following were the winners:

- | | |
|------------------|--------------------|
| 1. Harold Taylor | 6. Debra Kalscheur |
| 2. Steve Skirrow | 7. Don Bray |
| 3. John Powell | 8. Lewis Reynolds |
| 4. James Knoll | 9. Leslie Pinson |
| 5. Don Niemczyk | 10. Mark Lemitt |

Raffle winners were then drawn (Amber recorded the winners).

Meeting concluded.

Submitted by Debra Kalscheur

CMS Board Meeting Notes for November 19, 2013

Attendees: Bruce Sales, Gary Rowe, Debbie Kalscheur, Eva Siemonsma, Sandra Gonzales, Cara Reynolds, Leslie Osgood, Amber Brenzikofer

Old Business:

1. Denver Show update has confirmed what the guidelines on how club displays will be judged in the future:
Judging will be based on 33% showmanship and 67% on minerals found on club outings
2. CMS board members asked for volunteers to head up the Display Committee
Dan Wray, Harold Taylor, and Leslie Seibel have agreed to head up the Display Committee
The board members thanks Dan, Harold, and Leslie for stepping up to volunteer
3. CMS was asked to put up a mineral display at the Wheat Ridge Recreation Center this spring
This project will be turned over to the new display committee
4. Recognition to past volunteers
The Board will recognize these volunteers at the January meeting
5. Recognition of Life Time Members
New Life time members will be recognized in January
6. Hospitality volunteer position is still opened
The board is calling for volunteers to take over Hospitality
7. Christmas Party Update
 - *Needing volunteers to help set up for the Christmas Party starting at 5pm*
 - *Christmas Party start at 6:30pm*
 - *Volunteers needed to help break down and clean after Christmas Party*
 - *Christmas Ornaments made by Leslie will be given to the Christmas Carolers*
 - *Mitten Tree will be set up for donations to the church, Cake walk, present exchange / \$10.00 gift, amateur and professional mineral identification contest, red & green mineral display / Bring your favorite red & green minerals to be displayed*
8. Re-wording of the CMS By-Laws
This will be addressed in January
9. Jr. Rockhounding Badge Educational program
January program will be on "The use of computers for rockhounding"

New Business:

Bruce Sales: Open discussion for new business

Cara Reynolds: Reported on CMS membership at 221 members

Lewis is keeping attendance for the Jr. Rockhounding program

Eva Siemonsma – Renewed CMS trade name

Gary Rowe: New Mexico Field Trip update: The field trip was a success with various clubs participating

Amber Brenzikofer – Newsletter due date is Saturday, November 23rd

Meeting Adjourned

Next CMS Board meeting is December 17, 2013

Submitted by Sandra Gonzales



Colorado Mineral Society
PO Box 280755
Lakewood, CO 80228

FIRST CLASS MAIL



UPCOMING MEETINGS

Regular CMS Meeting - December Christmas Holiday Pot Luck Party

Date: December 6, 2013 Time:
6:30pm (*Note Earlier Time*)

Place: St. Paul's Church, Lakewood

Regular CMS Meeting - January

Date: January 3, 2014 Time: 7:30pm

Place: St. Paul's Church, Lakewood

Fri.-Sun., Dec. 13-15, Flatirons Mineral Club Rock & Mineral Show and Model Railroad

Show, taking place at the Boulder County
Fairgrounds, Main Exhibits Building, Hover &
Nelson Roads, Longmont, CO.

Fri., Dec 13th, 10am-6pm, Rock and Mineral
Show Only

Sat., Dec. 13th, 9am-5pm

Sun., Dec. 15th, 10am-5pm

Admission: Fri. \$3, Sat. \$5, Sun. \$5

Ages 12 and under free with paying adult

CMS is part of the Rocky Mountain Federation of
Mineralogical Societies and American Federation of
Mineralogical Societies. The RMFMS Newsletter can be
found at www.rmfmts.org and the AFMS Newsletter can
be found at www.amfed.org. Check them out!!!!!!



<http://www.coloradomineralsociety.org>